

DAVIS

HOLDINGS

1500 McGowen

1500 McGowen
Houston, TX 77004
NWQ of McGowen & LaBranch

LEASING INFORMATION

Kate Davis

✉ kdavis@davisholdingslp.com 🌐 davisholdingslp.com

📞 713.659.3131, ext. 111

**CONSTRUCTION UNDERWAY!
OPENING FALL 2021**

**RETAIL SPACE IN UPDATED,
CONTEMPORARY MIXED-USE
BUILDING FOR LEASE**

HIGHLIGHTS

Situated in the vibrant Midtown submarket south of the Houston CBD and St. Joseph Medical Center, 1500 McGowen is surrounded by new multi-family, townhome and retail development.

THE MIXED-USE MIDTOWN SUBMARKET HAS EVOLVED INTO A MAJOR EPICENTER FOR ARTS, COLLABORATIVES, EATERIES, AND NIGHTLIFE.

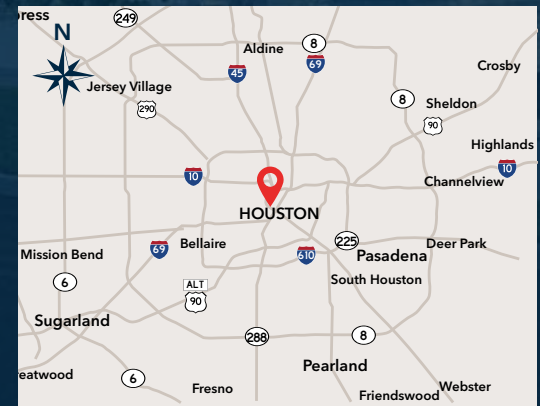
1500 McGowen Street has convenient access to the Hwy 59 entrance ramp and downtown. The METRORail Red Line runs directly through Midtown along Main Street with the McGowen Station just four blocks from the property.



AVAILABLE

1,681 SF

The new retail portion of the Building is accented with a metal "skin," a cantilevered awning, new, widened storefronts, and a sizable outdoor restaurant patio.



DAVIS

HOLDINGS

1500 McGowen

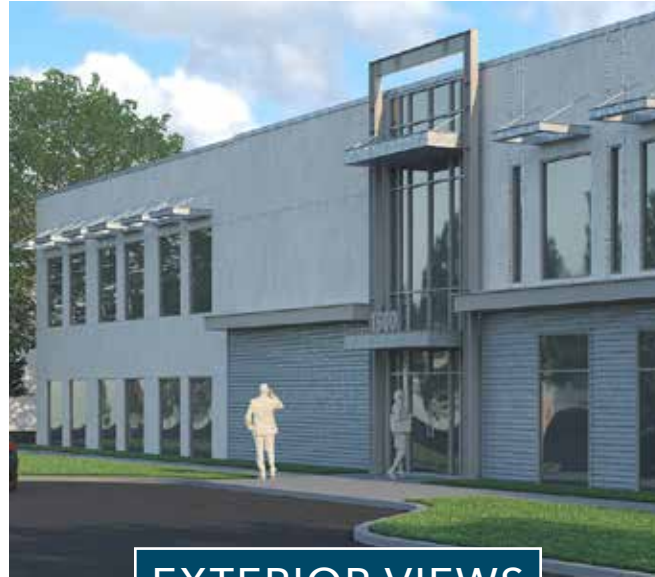
1500 McGowen
Houston, TX 77004
NWQ of McGowen & LaBranch

LEASING INFORMATION

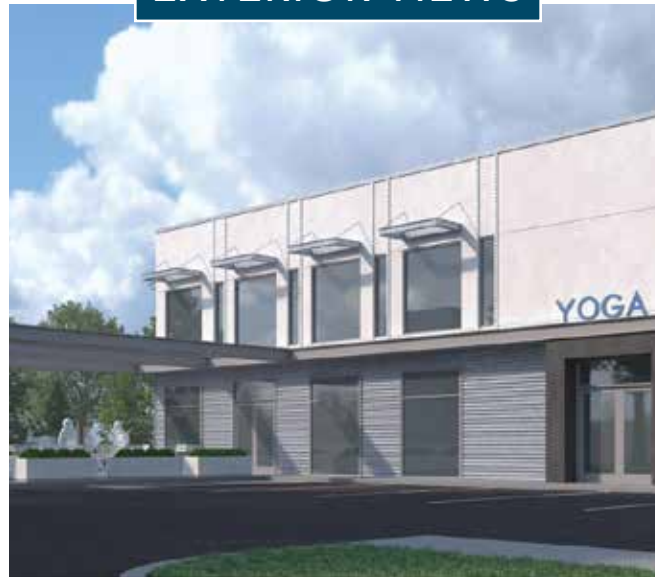
Kate Davis

✉ kdavis@davisholdingslp.com 🌐 davisholdingslp.com

☎ **713.659.3131, ext. 111**



EXTERIOR VIEWS



The information contained herein was obtained from sources deemed reliable; however, no guarantees, warranties or representations are made as to the completeness or accuracy thereof. The presentation of this real estate information is subject to errors, omissions, change of price, prior sale or lease, or withdrawal without notice.

DAVIS

HOLDINGS

1500 McGowen

1500 McGowen
Houston, TX 77004
NWQ of McGowen & LaBranch

LEASING INFORMATION

Kate Davis

✉ kdavis@davisholdingslp.com 🌐 davisholdingslp.com

☎ 713.659.3131, ext. 111



INTERIOR VIEWS



DAVIS

HOLDINGS

1500 McGowen

1500 McGowen
Houston, TX 77004
NWQ of McGowen & LaBranch

LEASING INFORMATION

Kate Davis

✉ kdavis@davisholdingslp.com 🌐 davisholdingslp.com

☎ 713.659.3131, ext. 111



PARKING

GATED SURFACE PARKING

1500 McGowen has both gated surface parking and retail parking.

- Lots 1 & 2 are on-site
- Lot 3 is close by (at the corner of Austin & McGowen)

93
PARKING SPACES

3.1/1,000
PARKING RATIO

This site plan rendering is provided to depict the general size and location of the building(s), property grounds, parking areas and amenities. Davis Bros. reserves the right to alter the aforementioned. Tenant names are subject to change without notice.

DAVIS

HOLDINGS

1500 McGowen

1500 McGowen
Houston, TX 77004
NWQ of McGowen & LaBranch

LEASING INFORMATION

Kate Davis

✉ kdavis@davisholdingslp.com 🌐 davisholdingslp.com

☎ 713.659.3131, ext. 111

LEGEND

++++ METRORail Line

— Completed Projects

— Projects in Design/Construction

— Planned Projects

MAIN STREET CORRIDOR
Significant capital projects, including Midtown Park, Main Street Streetscape, and Holman Streetscape, are taking place along the Main Street Corridor. Many are already complete.

CAROLINE STREET RECONSTRUCTION

This \$15 million reconstruction includes safety and convenience enhancements, rain gardens, seasonal displays, dedicated bicycle lane, and custom furnishings. Construction is underway.

NEW & PLANNED MIDTOWN STREETS & PARKS

PROJECTS

- Brazos Street Reconstruction
- Main Street Enhancement Project
- Holman Streetscape
- Caroline Street Reconstruction
- Baldwin Park
- Bagby Street Greenroads Project
- Bagby Park
- Midtown Park

Midtown Houston has successfully revitalized the portion of Midtown west of Main Street. Over the next 5 years, East Midtown will get its turn. Enhanced roadways, bike lanes, new parks, traffic lights, and relaxed parking requirements, are all part of Midtown's plan to attract new development to the area, bridge together East Midtown, West Midtown, and Downtown, and create an urban, walkable environment. 1500 McGowen is just one of many mixed use projects coming to the neighborhood.

Graphic content from Midtown Houston

DAVIS

HOLDINGS

1500 McGowen

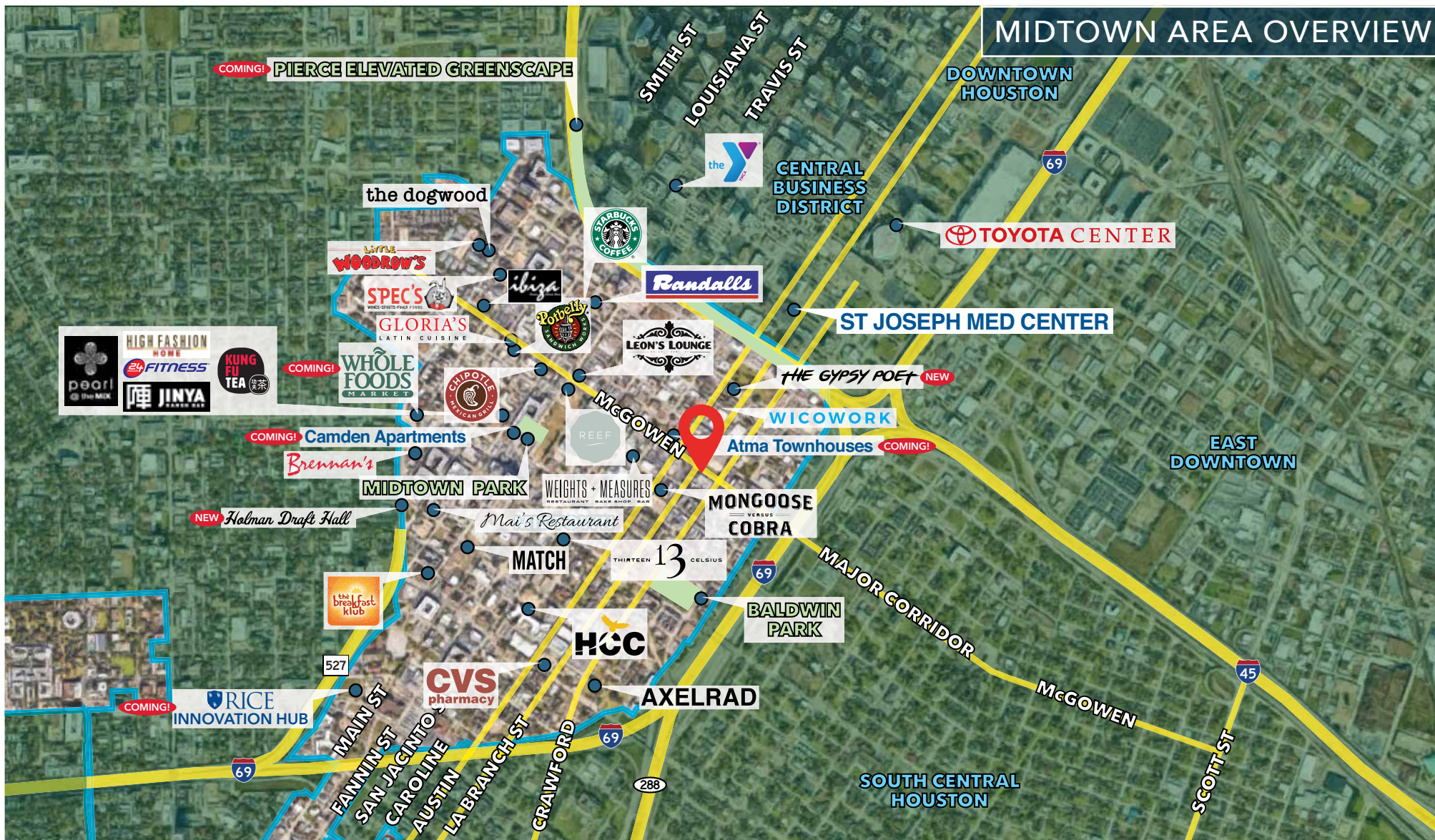
1500 McGowen
Houston, TX 77004
NWQ of McGowen & LaBranch

LEASING INFORMATION

Kate Davis

✉ kdavis@davisholdingslp.com 🌐 davisholdingslp.com

☎ **713.659.3131, ext. 111**



This site plan rendering is provided to depict the general size and location of the building(s), property grounds, parking areas and amenities. Davis Bros. reserves the right to alter the aforementioned. Tenant names are subject to change without notice.

DAVIS

HOLDINGS

1500 McGowen

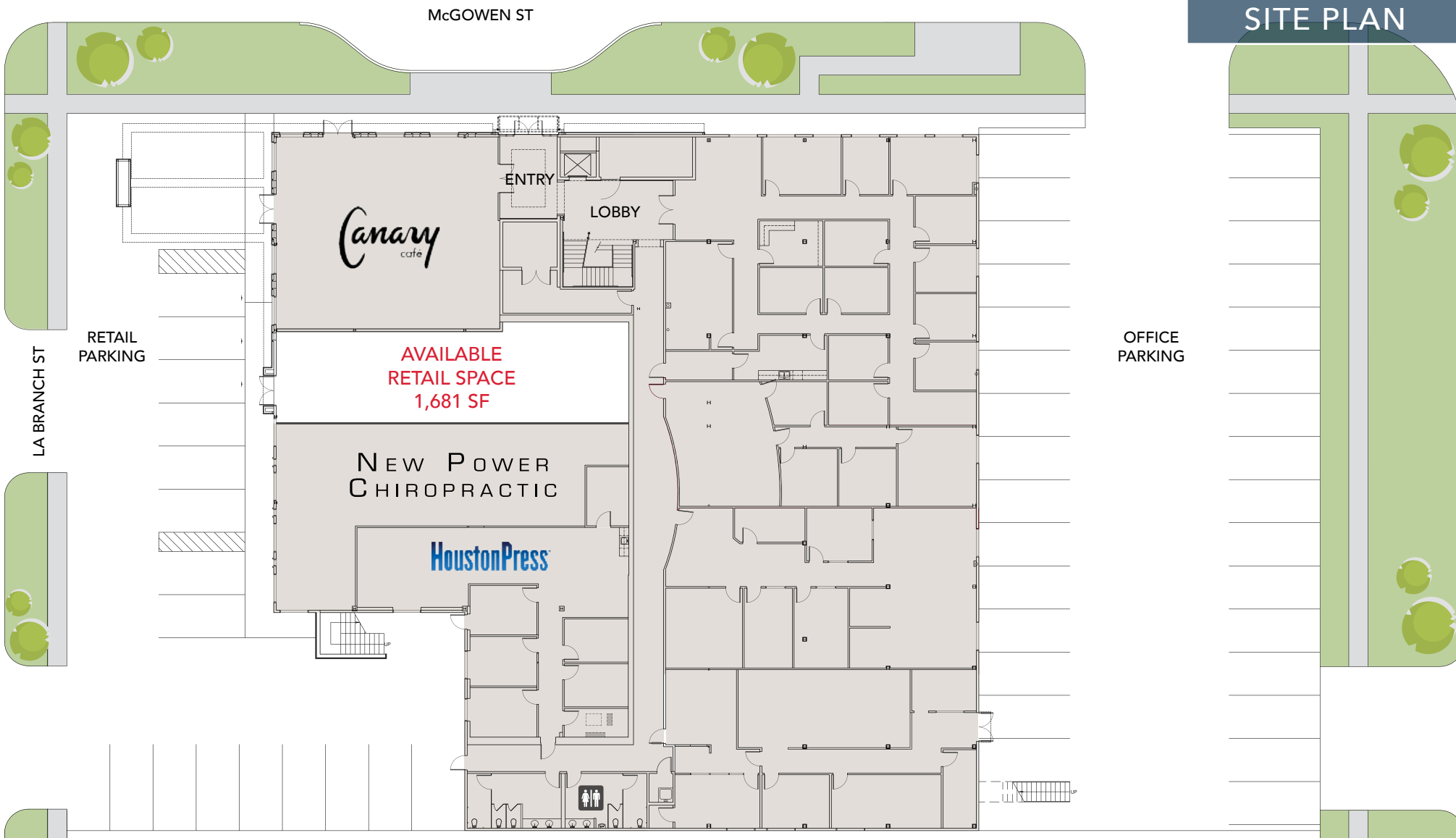
1500 McGowen
Houston, TX 77004
NWQ of McGowen & LaBranch

LEASING INFORMATION

Kate Davis

✉ kdavis@davisholdingslp.com 🌐 davisholdingslp.com

☎ **713.659.3131, ext. 111**



SITE PLAN

This site plan rendering is provided to depict the general size and location of the building(s), property grounds, parking areas and amenities. Davis Bros. reserves the right to alter the aforementioned. Tenant names are subject to change without notice.

WHOLE FOODS
The 40,000 sf store will open on the 1st floor of a mixed-use project in Midtown November 2019.

🚗 4 minutes to site



Photo from swamplot.com

THE GYPSY POET
Artisan pizza studio.

🚶 4 minutes to site



Photo from Gypsy Poet on Instagram

RETROSPECT
Locally roasted coffee, craft beer, interesting wines, paninis, crepes, muffins and pastries. Vegetarian and vegan.

🚶 12 minutes to site



Photo from Retrospect on Instagram

INNOVATION HUB
Rice University is transforming the former Sears building in Midtown Houston into The Ion, an innovation hub.

🚗 4 minutes to site



Photo from Rice Management Company

WEIGHTS + MEASURES
Casual neighborhood restaurant, bakeshop and bar in a 1950s industrial warehouse.

🚶 6 minutes to site

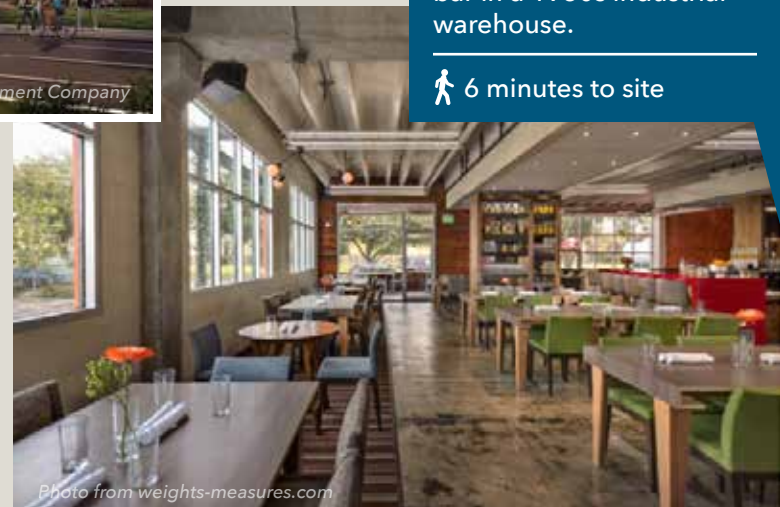


Photo from weights-measures.com

DAVIS

HOLDINGS

1500 McGowen

1500 McGowen
Houston, TX 77004
NWQ of McGowen & LaBranch

LEASING INFORMATION

Kate Davis

✉ kdavis@davisholdingslp.com 🌐 davisholdingslp.com

☎ 713.659.3131, ext. 111

VENTANA AT MIDTOWN
4001 Fannin
Year Built: 2001
Units: 254

🚗 3 minutes to site

SAN JACINTO
3817 Fannin
Year Built: 1940
Units: 37

🚗 5 minutes to site

1624 HOLMAN
Year Built: 1938
Units: 56

🚶 12 minutes to site

PROPOSED & CATTY CORNER TO SITE:
ATMA AT MCGOWEN
1403 McGowen
Year Built: 2022
Units: 71

🚶 1 minute to site

MIDTOWN APARTMENTS

EAST OF MAIN STREET:

THOUSANDS OF APARTMENT UNITS OPEN, PLANNED & UNDER CONSTRUCTION

WALK SCORE®
VERY WALKABLE (77)

TRANSIT SCORE®
EXCELLENT TRANSIT (78)

682 ADDITIONAL APARTMENT UNITS
ARE SCHEDULED TO OPEN BY 2022

MIDTOWN GROVE
3603 Chenevert St
Year Built: 2012
Units: 51

🚶 15 minutes to site

DREWERY PLACE
2850 Fannin
Year Built: 2019
Units: 357

🚶 9 minutes to site

2111 AUSTIN
Year Built: 2020
Units: 214

🚶 7 minutes to site

KOWLES-TEMENOS
1719 Gray
Year Built: 2009
Units: 43

🚶 9 minutes to site

This site plan rendering is provided to depict the general size and location of the building(s), property grounds, parking areas and amenities. Davis Bros. reserves the right to alter the aforementioned. Tenant names are subject to change without notice.

DAVIS

HOLDINGS

1500 McGowen

1500 McGowen
Houston, TX 77004
NWQ of McGowen & LaBranch

LEASING INFORMATION

Kate Davis

✉ kdavis@davisholdingslp.com 🌐 davisholdingslp.com

☎ 713.659.3131, ext. 111

DEMOGRAPHICS

TRADE AREA BY BLOCK GROUPS



RADIUS

1 MILE

2 MILE

5 MILE

2020 Daytime Employees	39,449	196,920	593,846
Travel time to job: <30 minutes	10,684 78.74%	38,554 75.65%	161,613 69.76%



Population

2010	16,991	80,526	404,073
2020	23,700	102,581	474,376
2525 Projection	25,253	107,893	494,354
Growth 2010 - 2020	3.9%	2.7%	1.7%
Growth 2020 - 2025 Projection	1.3%	1.0%	0.8%



2020 Population by Age

Median Age	37.8	36.7	35.7
------------	------	------	------



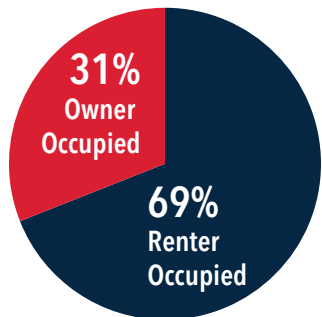
2020 Population by Education

Bachelor Degree or Higher	52%	45%	43%
---------------------------	-----	-----	-----



2020 Income

Avg Household Income	\$101,161	\$106,264	\$103,147
----------------------	-----------	-----------	-----------



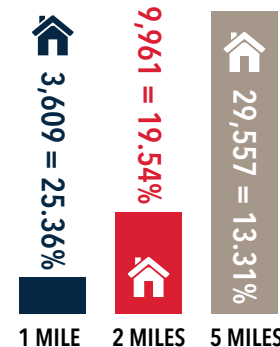
2 MILE 2020 OCCUPIED HOUSING



2020 MEDIAN HOME VALUE



2020 HOUSING UNITS



2020 HOUSING UNITS BUILT 2010+